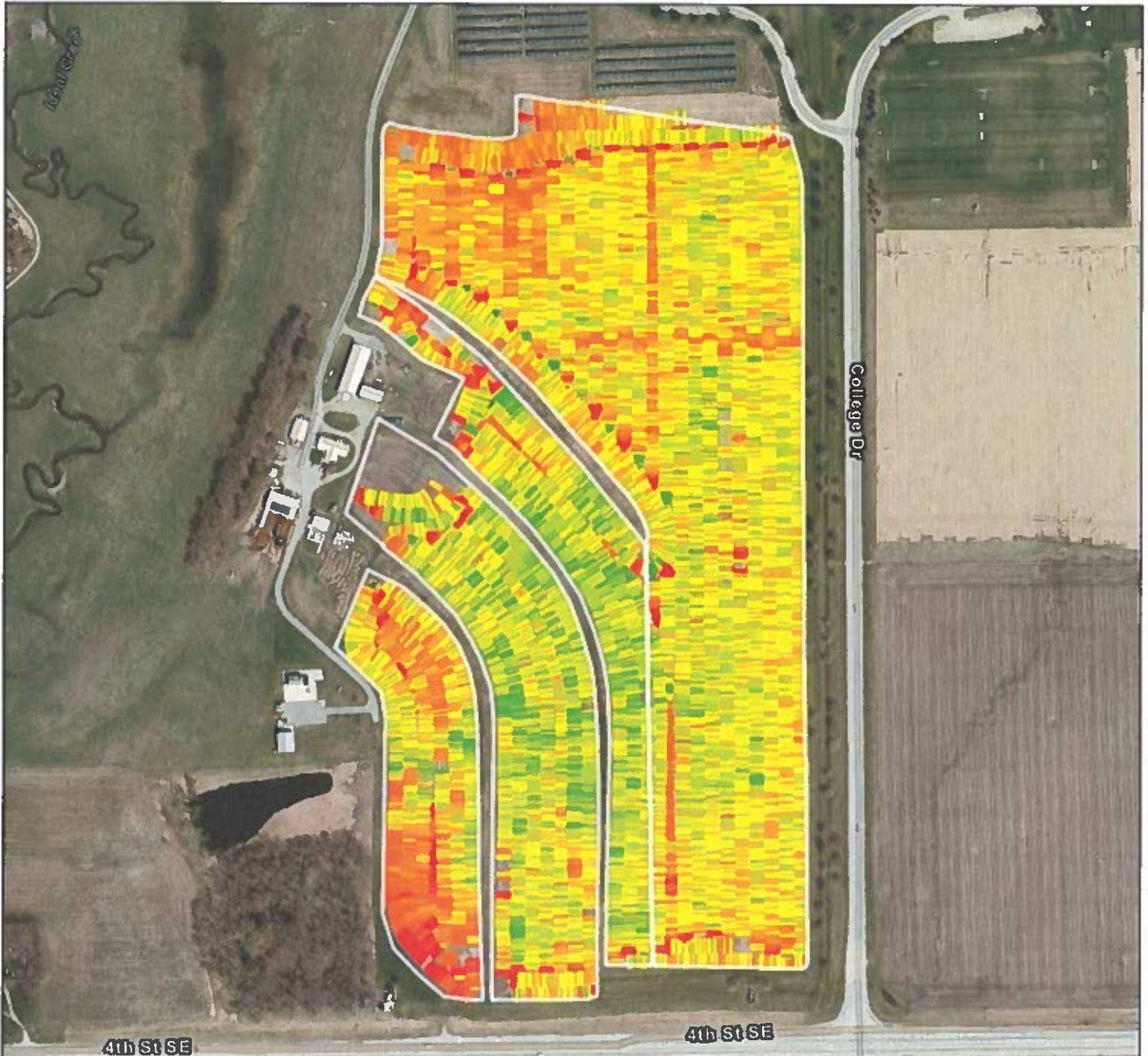


NIACC (WF)
NIACC
Field 1

Yield Map - 2024 Soybeans



Cerro Gordo County, Maxar | Esri Community Maps Contributors, City of Mason City, Iowa DNR, © OpenStreetMa... Powered by Esri

Min: 15.7 bu/ac
Max: 229.7 bu/ac
Avg: 67.5 bu/ac
Total: 3,503 bu
Area: 51.91 ac

Dry Yield (bu/ac)

15.7 - 40.3	(0.83 ac)
40.3 - 56.2	(4.25 ac)
56.2 - 64.9	(11.91 ac)
64.9 - 71.8	(18.21 ac)
71.8 - 80.1	(13.9 ac)
80.1 - 123.6	(2.79 ac)
123.6 - 229.7	(0.02 ac)



NIACC (WF)
NIACC
Field 2

Yield Map - 2024 Soybeans



Cerro Gordo County, Maxar | Esri Community Maps Contributors, City of Mason City, Iowa DNR, © OpenStreetMa... Powered by Esri

Min: 51.0 bu/ac
Max: 94.7 bu/ac
Avg: 69.6 bu/ac
Total: 4,421 bu
Area: 63.50 ac

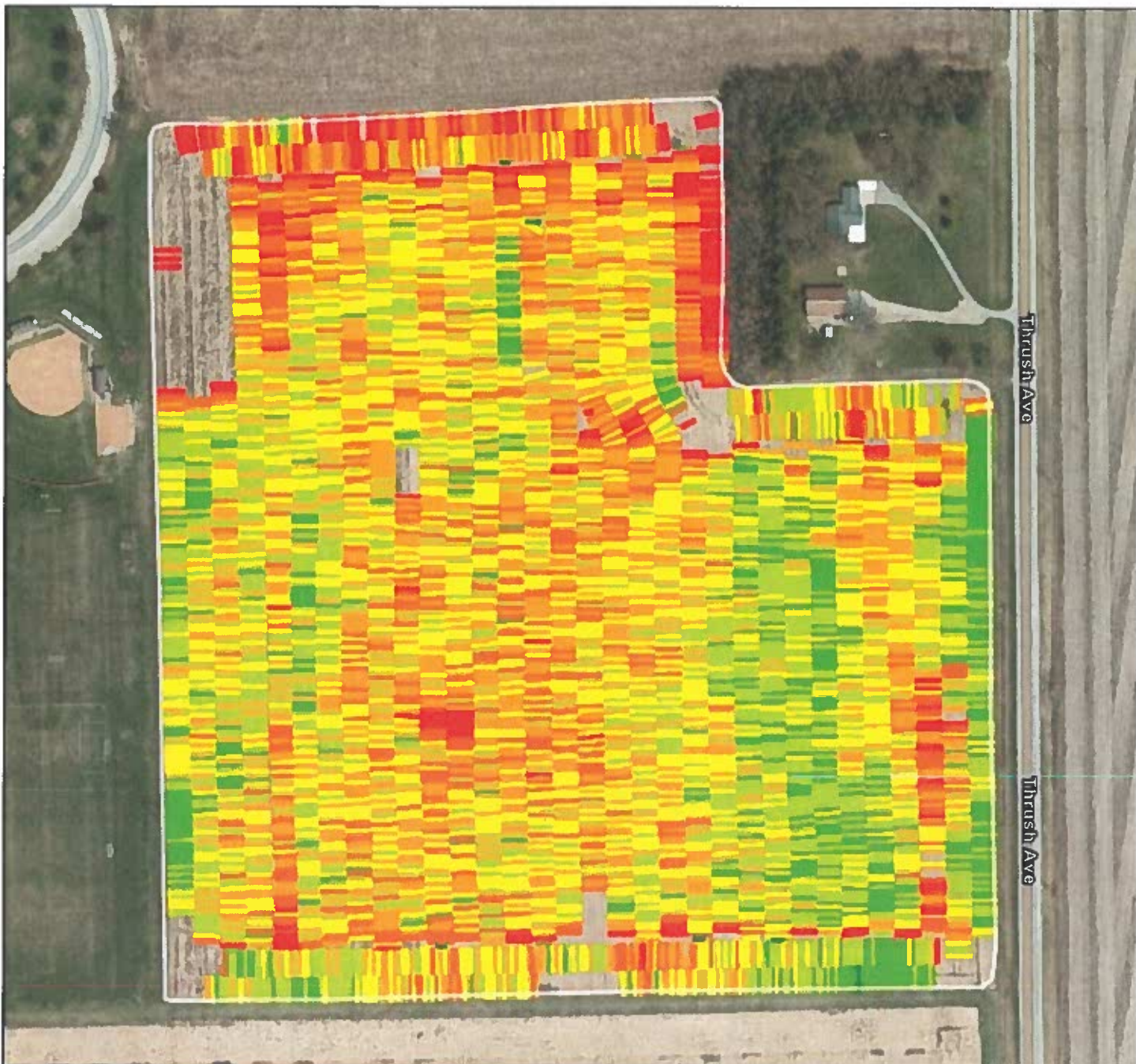
Dry Yield (bu/ac)

■ 51 - 58.1 (2.82 ac)
■ 58.1 - 63.1 (6.77 ac)
■ 63.1 - 67.1 (10.97 ac)
■ 67.1 - 70.6 (13.65 ac)
■ 70.6 - 74.2 (13.85 ac)
■ 74.2 - 78.3 (10.99 ac)
■ 78.3 - 94.7 (4.45 ac)



NIACC (WF)
NIACC
Field 4

Yield Map - 2024 Soybeans



Cerro Gordo County, Maxar | Esri Community Maps Contributors, City of Mason City, Iowa DNR, © OpenStreetMa... Powered by Esri

Min: 32.1 bu/ac
Max: 107.8 bu/ac
Avg: 57.9 bu/ac
Total: 1,779 bu
Area: 30.71 ac

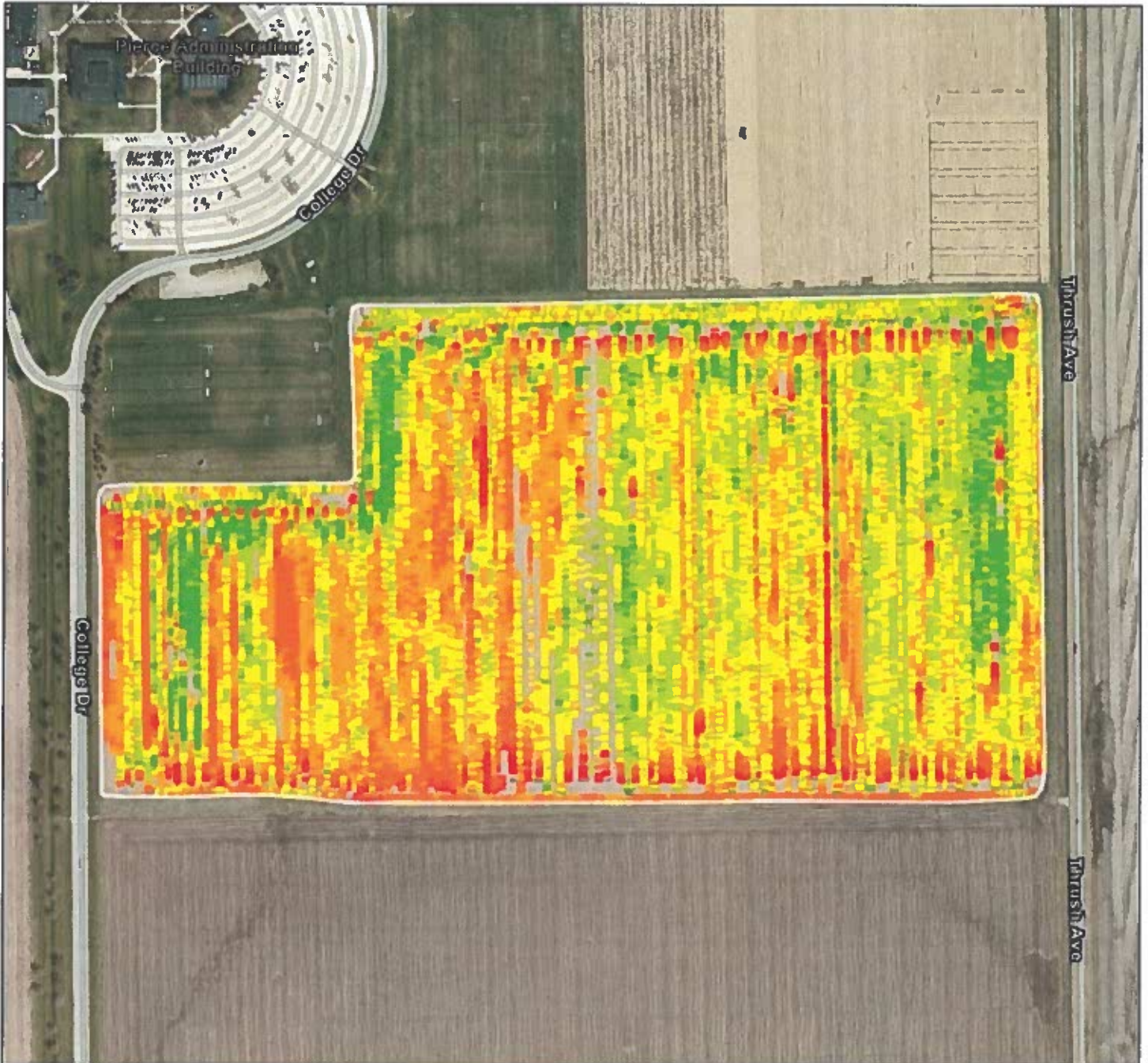
Dry Yield (bu/ac)

■ 32.1 - 44.3	(1.16 ac)
■ 44.3 - 51.8	(3.57 ac)
■ 51.8 - 56.8	(7.78 ac)
■ 56.8 - 61.2	(8.27 ac)
■ 61.2 - 66.3	(7.26 ac)
■ 66.3 - 80.8	(2.66 ac)
■ 80.8 - 107.8	(0.02 ac)



NIACC (WF)
NIACC
Field 3

Yield Map - 2024 Corn



Cerro Gordo County, Maxar | Esri Community Maps Contributors, City of Mason City, Iowa DNR, © OpenStreetMa... Powered by Esri

Min: 1 bu/ac
Max: 934 bu/ac
Avg: 168 bu/ac
Total: 10,572 bu
Area: 62.87 ac

Dry Yield (bu/ac)

1 - 83.5	(1.57 ac)
83.5 - 130.8	(7.19 ac)
130.8 - 160.1	(15.08 ac)
160.1 - 185.9	(18.68 ac)
185.9 - 216.3	(15.54 ac)
216.3 - 413.3	(4.79 ac)
413.3 - 934	(< 0.01 ac)

