

North Iowa Community Auditorium

Technical Information

500 College Drive, Mason City, Iowa 50401

The North Iowa Community Auditorium is located on the campus of North Iowa Area Community College.

Technical Director : Lawrence Guadagnoli | (641) 422- 4240 | lawrence.guadagnoli@niacc.edu

Stage Dimensions

Stage	50' W X 36' D
Pit / Apron	15' Curved Apron DS of the Proscenium, Pit area 40' x 11' Pit does don't extend under the stage, Pit access from the house
Wing Space	10' SR and 15' SL.
Proscenium	50' W X 23' H
Linesets SR	35 total, 24 available, Single Purchase, underhung/over head blocks SEE SCHEDULE BELOW
Arbor	1875lbs capacity SEE SCHEDULE BELOW
Grid Height	58'
Grid Capacity	900 lbs psf, 1100 lbs static psf, Separate clean grid from overhead lineset blocks
Curtains	Grand traveler (red) 25' H x 56' W Grand teaser (red) 12' H x 56' W (3) Black traveler curtain 25' H x 56' W (2) Black legs 25'H x 15' W (3) Borders 8' H x 56" W (1) Cyclorama 25' H x 40' W (1) Screen 14' H x 24' W
Orchestra Shell	White acoustic orchestra ceiling and walls. Walls stored USL

Loading

48" Dock Door	(1) 8" trailer 8' W x 9' H
Stage door	(1) Street level/Stage level Single Door 7' H x 3'6" W
Stacking Lift	(1) "Big Joe" stand behind fork lift located onstage for stacking, NOT for truck loading
Elevator	To FOH, door 7' H x 4' W

Power

Lighting/Rigging	(1) 400A DSL Camlock
Audio	(1) 100A ISO DSL Camlock

Lighting

Console	ETC ION Classic EOS Software
Dimming	(143) Dimmers (3) Electrics on stage fly system with (26) Dimmers per electric (2) FOH Catwalks with (21) dimmers on the 1 st cat and (19) dimmers on the 2 nd cat (6) floor pockets with (3) dimmers per pocket
Spot lights	(4) Super Trooper II's located far L/R back of house 112' throw
Source 4 Profiles	(27) 19° (27) 26° (32) 36° (4) 50°
Pars	(48) Source 4 Pars (18) ETC D60 Vivid
Strip lights	(12) ETC Color Source Linear 2
Moving heads	(6) Mac Quantum Profiles

Audio

PA L/R	(1) EAW QX118 (sub) Top Cabinet (1) EAW QX544 Middle Cabinet (1) EAW QX 594 Bottom Cabinet	[This config for both L & R]
Center cluster	(4) EAW KF730P Array	
Deck Subs	(2) EAW SB1001	
Front fills	(7) EAW UB52i	
Monitors	(5) EAW Microwedge 12" passive, (4) Yamaha Club 12"	
FOH Console	Yamaha CL5	
MonitorConsole	Yamaha QL5	
Connectivity	PA Tie in DSL 48 in 32 out RIO DSL, 16 in 8 out RIO FOH	
Microphones	(7) Wired SM58, (6) ULX Beta 58, (12) Shure ULX Lavs and packs, (6) SM57, (2) SM 81, (2) KSM 141, (2) KSM 137, (2) AKG c1000s, (1) Shure 52a, (1) Shure 91a, (4) Senn e604, (4) Crown PCC-160, (4) Audio-Technica U853, (2) DPA 4099 piano (1) barcus berry piano pickup	
Communication	Clear Com (5) Wireless, (12) wired, (2) beacon/handsets, (10) radios	
Mix Position	Located in the rear aisle center, back of house, public uses this aisle 170' snake run from DLS tie in location to FOH	

Dressing Rooms / Laundry

Large Rooms	(3) Total at stage level located US of the crossover. (2) Rooms are separated with a divider. Each side is adjacent to the men's and women's restrooms respectively. Opening the divider can create on large room. (1) Large room is USR with the men's restroom adjacent.
Small Rooms	(2) Small star dressing rooms at stage level located US of the crossover. Both with sinks and restrooms with toilets.
Showers	(2) Showers total, (1) in the women's restroom and (1) in the men's restroom
Storage areas	(2) Large storage areas that can be used as dressing rooms TBD during advance
Laundry	(2) Washers, (2) Dyers located upstairs 1 floor backstage

Properties

Pianos	(1) 9' Steinway D, (1) Upright, both stored in climate control
Risers	(12) Choral risers, (18) 4' x 8' decks, (4) 3' x 6' decks, 8" 16" 24" 32" legs
Lectern	(1) Lectern with NIACC crest
Podium	(1) Conductor podium
Chairs / Stands	(96) Orchestra chairs, (6) Cello Chairs, (100) Music stands, (40) Stand lights
Projector	Epson L1505 12k Lumen Laser projector
Screen	14' X 24' screen, front or rear projection
Cyclorama	25' X 40' CYC

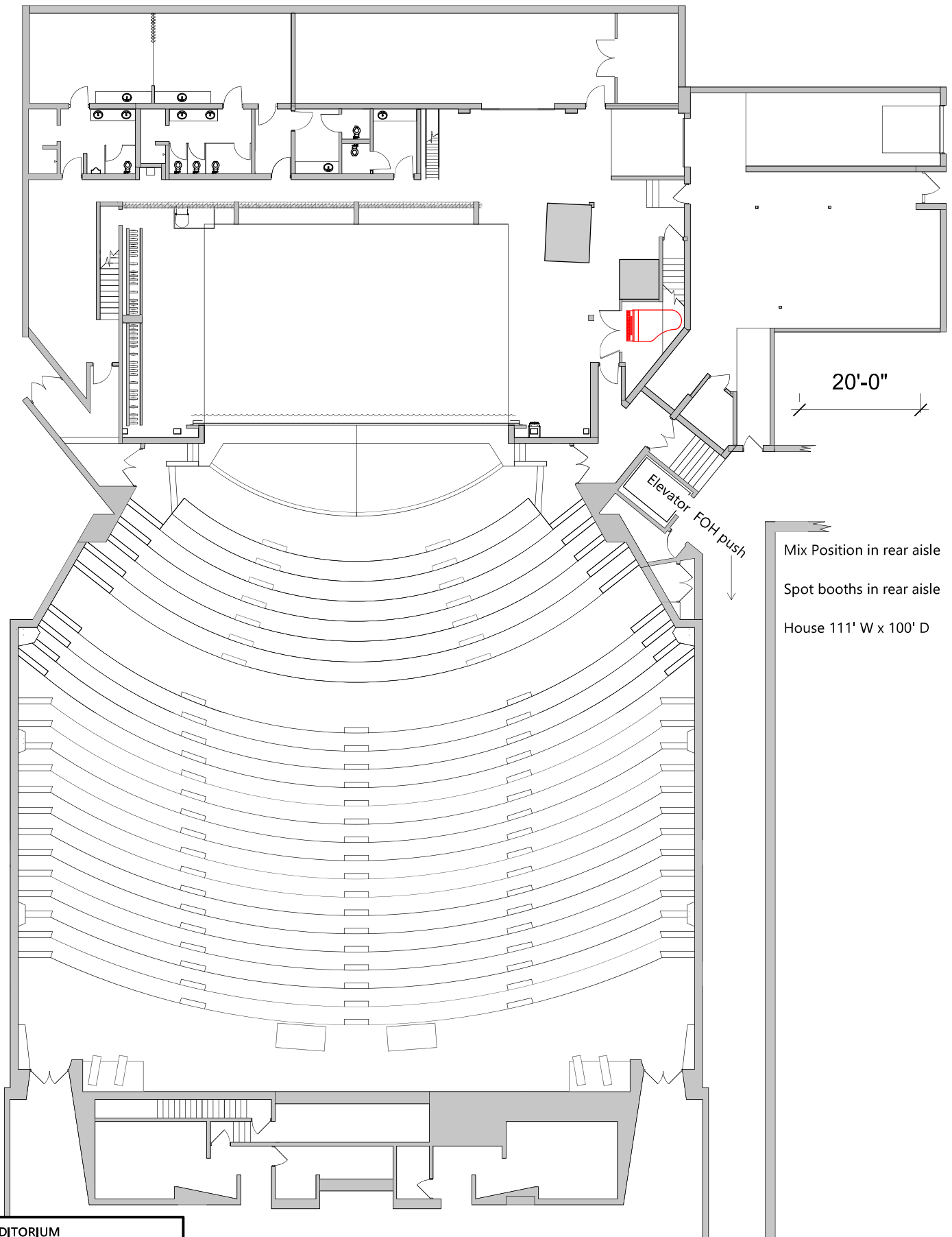
Audience Seating

Capacity	(1196) Total
ADA Accessible	(12) Wheelchair accessible spaces in row H, sections D and G with companion seating in row I

NIACC LINSET SCHEDULE

#	NAME	Distance from PL			Pipe Width	Flyout	
		FT	IN	Total IN	FT	FT	
	Fire Curtian	0	4	4			DEDICATED
1	Grand Teaser	1	0	12	56	56	DEDICATED
2	Grand Traveler	1	8	20	56	54.5	DEDICATED
3	Electric #1	3	0	36	56	54.5	DEDICATED
4		3	8	44	50	56	
5	Traveler #1	4	4	52	56	54.5	DEDICATED
6		5	0	60	50	56	
7		5	8	68	50	56	
8	Ceiling Shell #1	7	0	84	56	44	DEDICATED
9	Border #1	8	4	100	56	56	
10	Legs #1 w/track	9	0	108	56	56	
11	SCREEN	9	8	116	50	56	
12		10	4	124	50	56	
13	Electric #2	11	8	140	56	54.5'	DEDICATED
14		13	0	156	50	56	
15		13	8	164	50	56	
16		14	4	172	50	56	
17		15	0	180	50	56	
18	Ceiling Shell #2	16	4	196	56	44	DEDICATED
19		18	8	224	50	56	
20	Border #2	19	4	232	50	56	
21	Traveler #2	20	0	240	56	54.5	DEDICATED
22		20	8	248	50	56	
23	Electric #3	22	0	264	56	54.5	DEDICATED
24		23	4	280	50	56	
25	Border #3	24	0	288	56	56	
26	Legs #2 w/track	24	8	296	56	56	
27		25	4	304	50	56	
28	Ceiling Shell #3	26	8	320	56	44	DEDICATED
29		28	0	336	50	56	
30		28	8	344	50	56	
31		29	4	352	50	56	
32		30	0	360	50	56	
33	Traveler #3	30	8	368	56	54.5	DEDICATED
34		31	4	376	50	56	
35		32	0	276	50	56	

NORTH IOWA AUDITORIUM



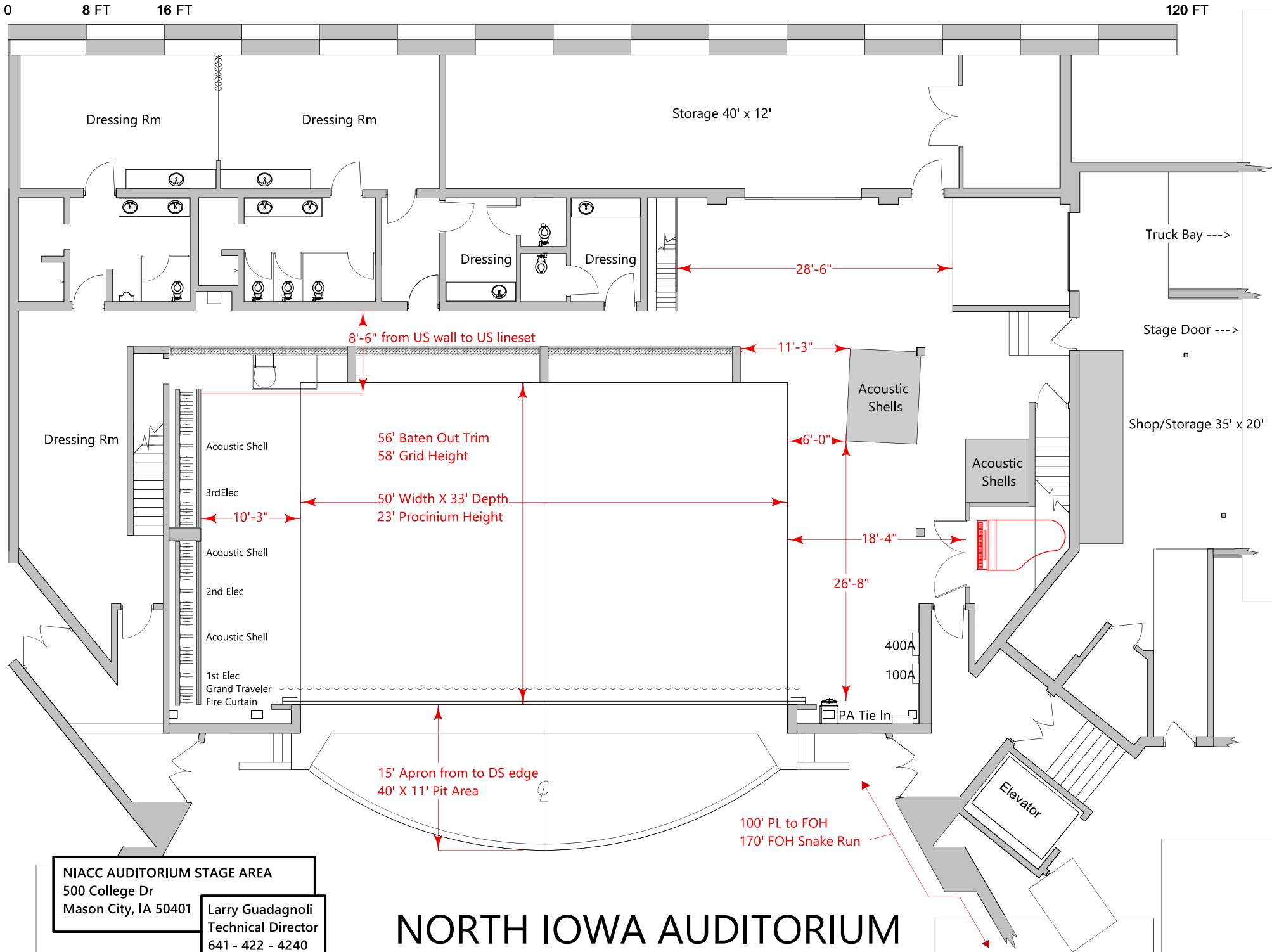
20'-0"

Elevator FOH push

Mix Position in rear aisle
Spot booths in rear aisle
House 111' W x 100' D

NIACC AUDITORIUM
500 College Dr
Mason City, IA 50401

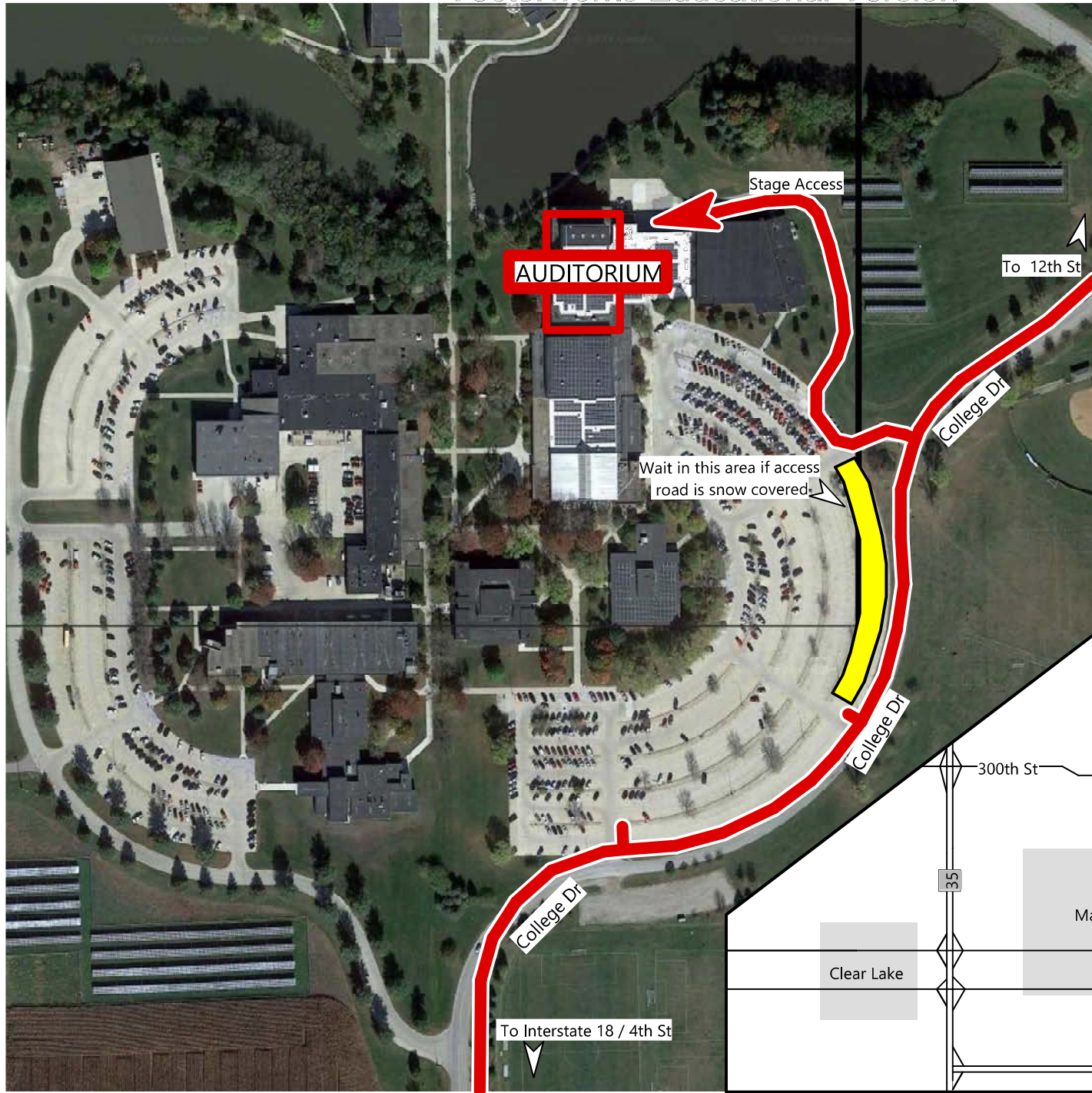
Larry Guadagnoli
Technical Director
641 - 422 - 4240




NIACC AUDITORIUM STAGE AREA
 500 College Dr
 Mason City, IA 50401

Larry Guadagnoli
 Technical Director
 641 - 422 - 4240

NORTH IOWA AUDITORIUM



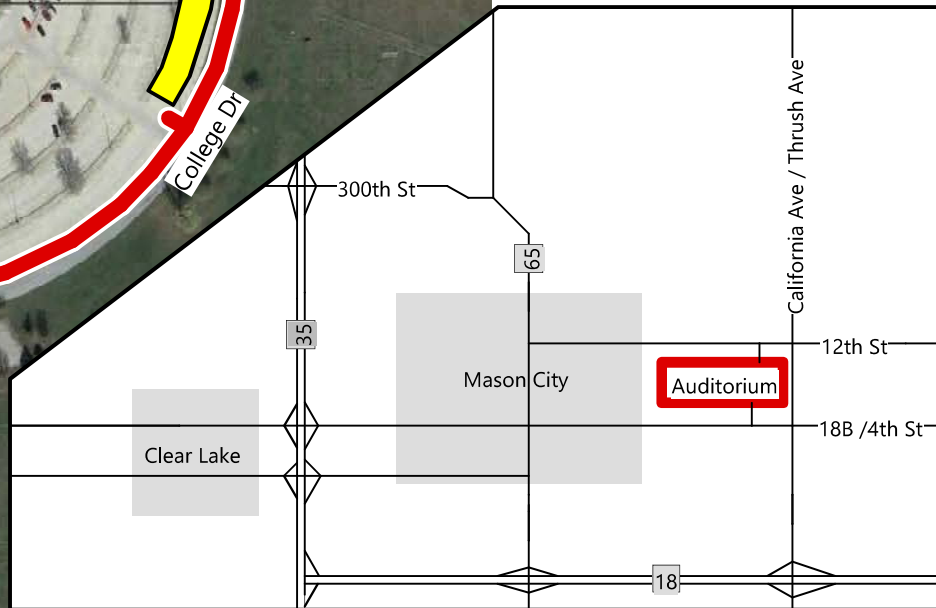
N



North Iowa Area
Community College
Auditorium

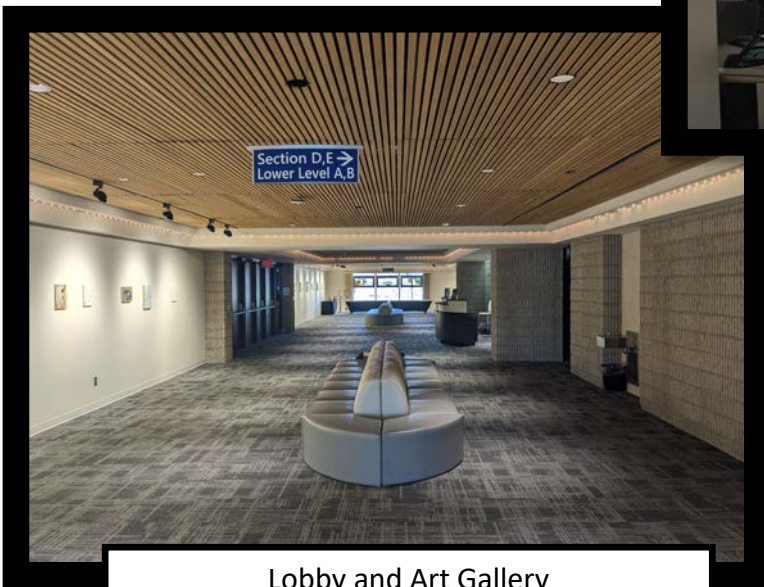
500 College Drive
Mason City, IA
50401

Lawrence Guadagnoli
Technical Coordinator
(641) 422- 4240

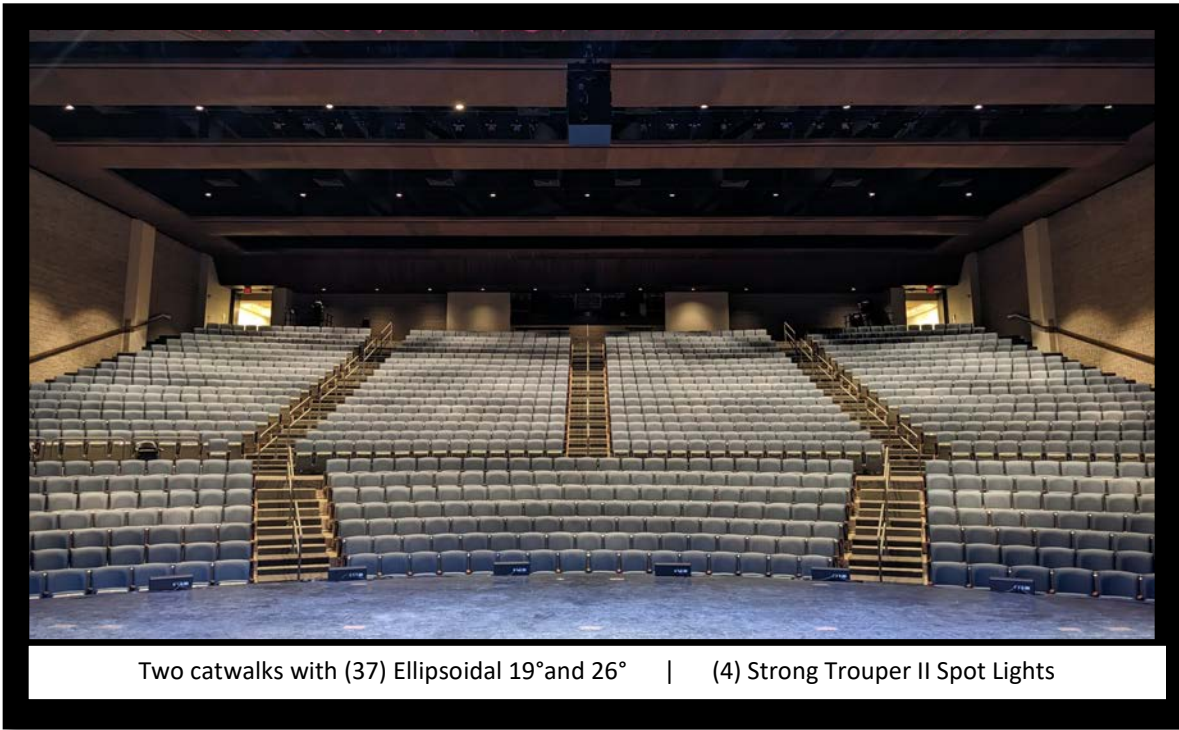




Mix position in this rear aisle of the house



Lobby and Art Gallery



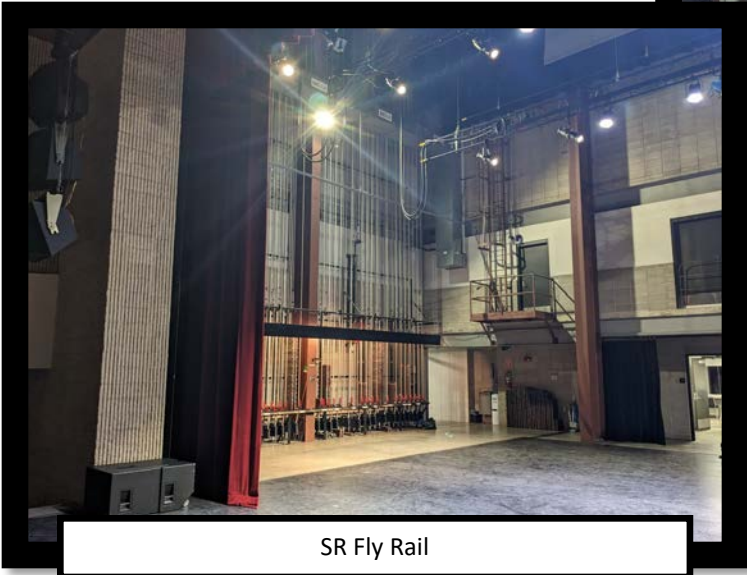
Two catwalks with (37) Ellipsoidal 19° and 26° | (4) Strong Troupier II Spot Lights



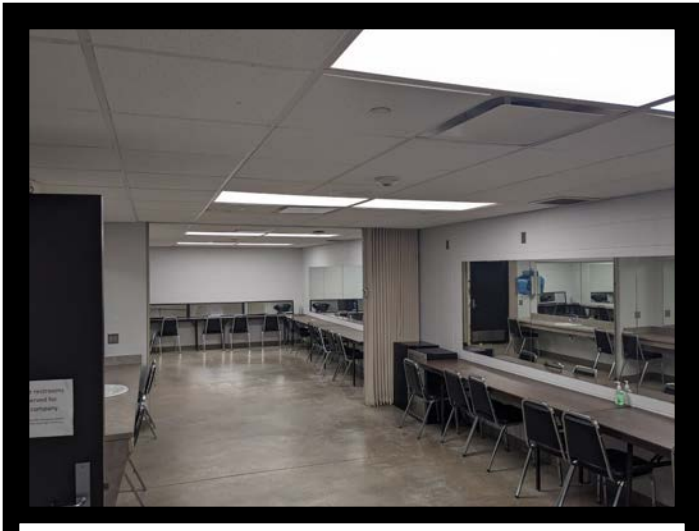
DSL PA tie in, 400a and 100a iso. 180ft snake run to FOH



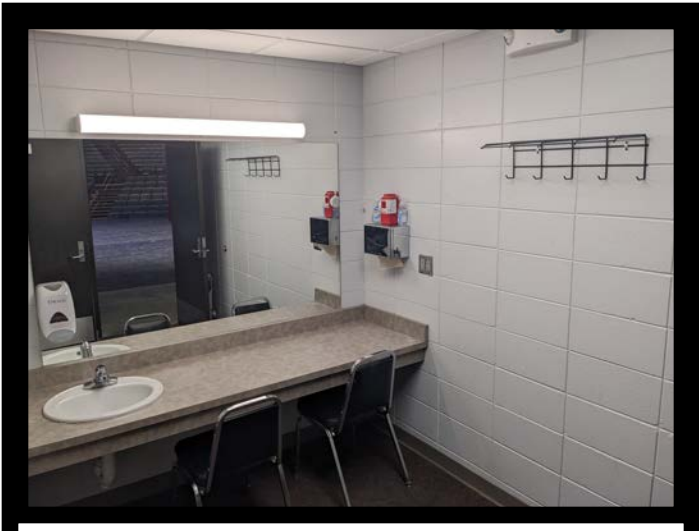
SL acoustic tower storage, stage doors, dock



SR Fly Rail

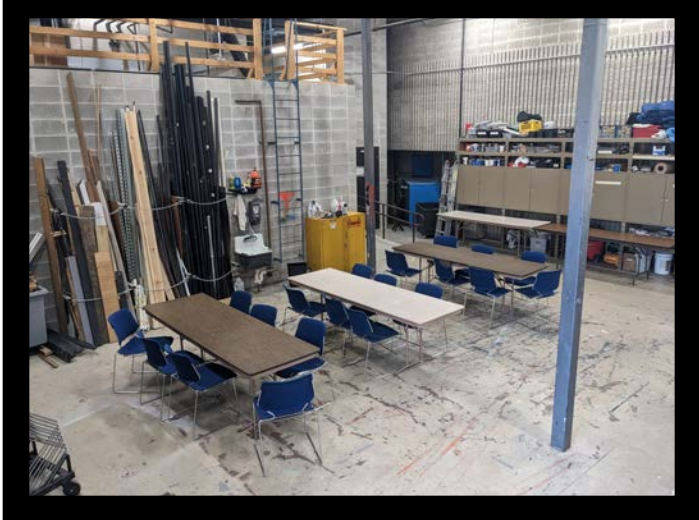


(2) large dressing rm dividable with bathroom & showers

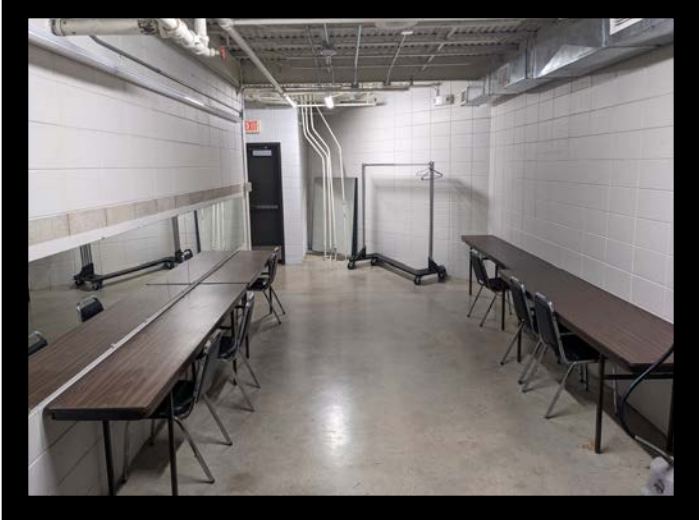


(2) small star dressing rms with restroom, no showers

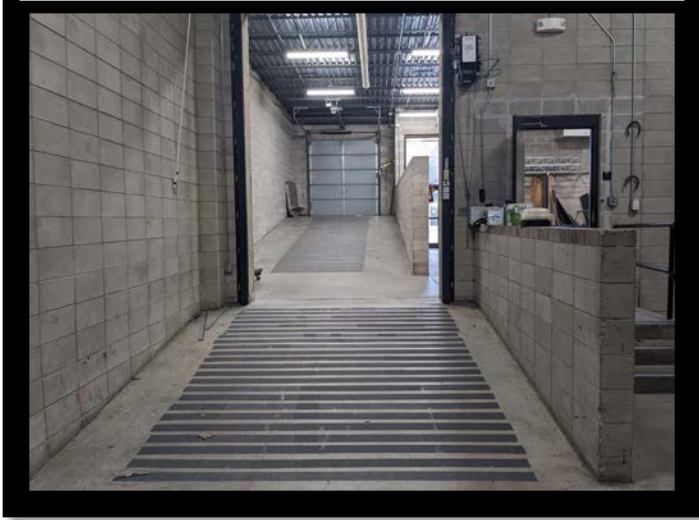
Shop area for storage or catering adjacent to dock



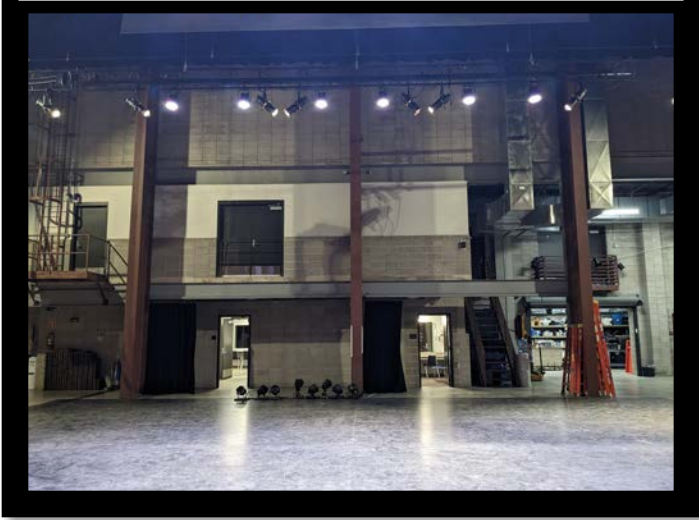
(3rd) large dressing rm, adjacent to men's restroom



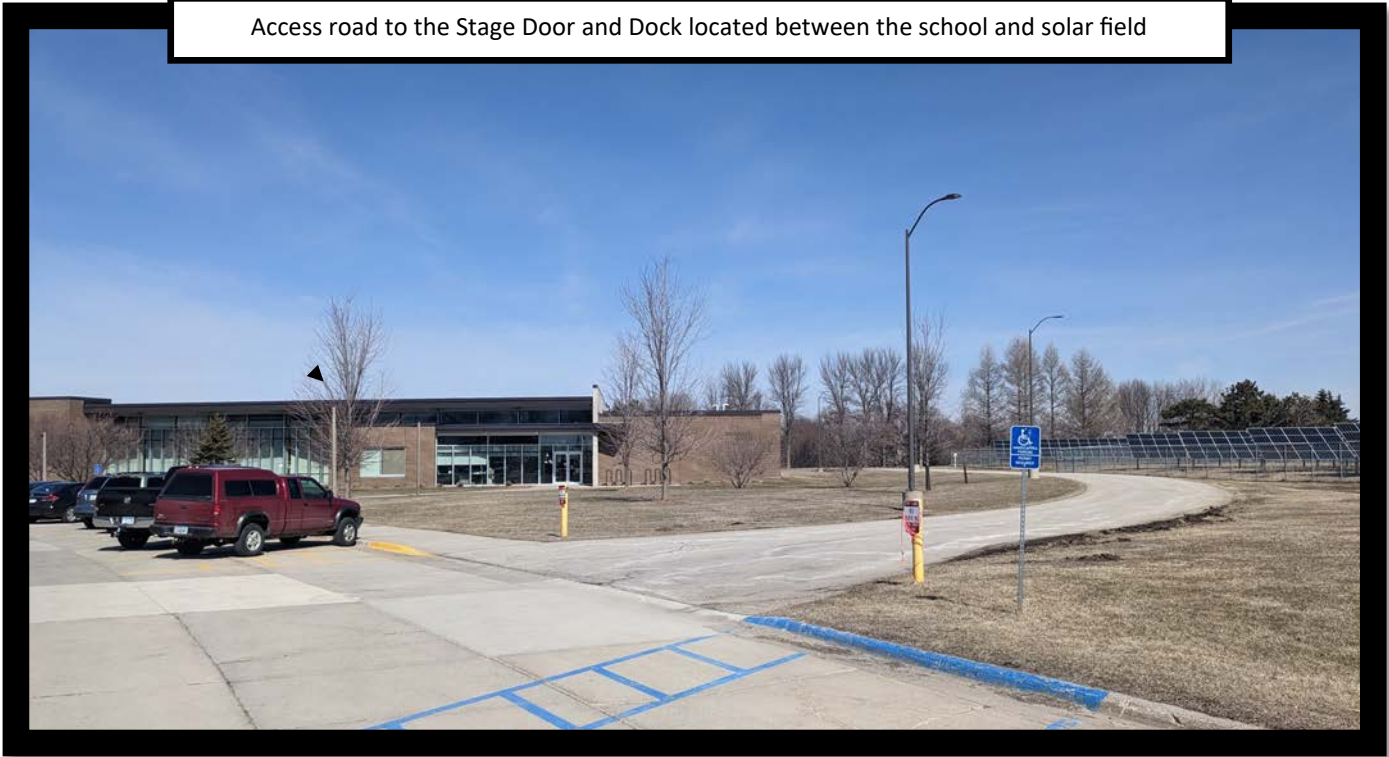
Single dock. Ramp: 55' run, 6' rise



All Dressing Rooms located US at stage level



Access road to the Stage Door and Dock located between the school and solar field

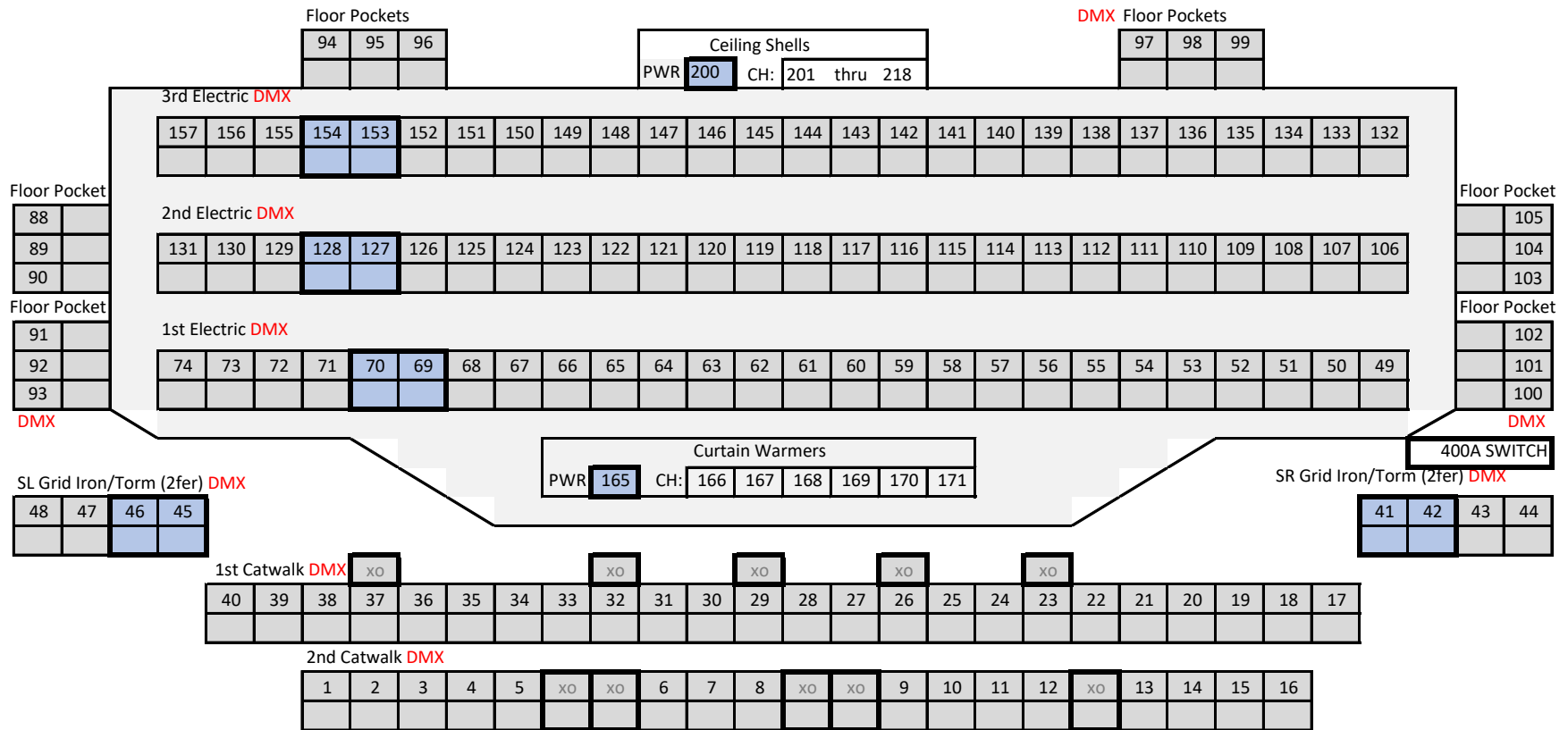


Enough parking for 6 Trucks/busses



Dock and Stage Doors

NORTH IOWA AREA COMMUNITY COLLEGE AUDITORIUM ADDRESSES



Desire D60 Vivid

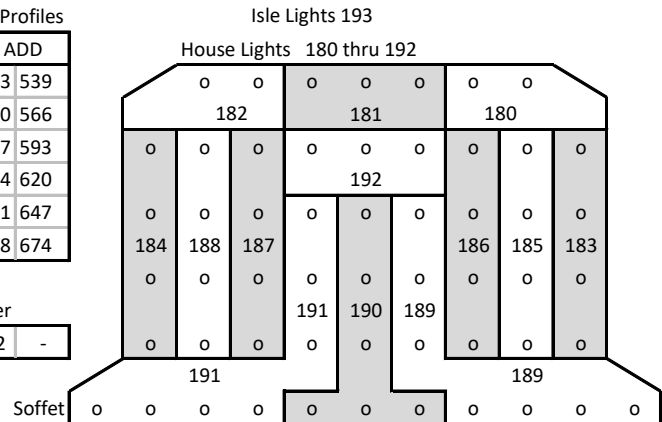
CH	ION ADD	CH	ION ADD
261	710 718	270	791 799
262	719 727	271	800 808
263	728 736	272	809 817
264	737 745	273	818 826
265	746 754	274	827 835
266	755 763	275	836 844
267	764 772	276	845 853
268	773 781	277	854 862
269	782 790	278	863 871

Quantum Profiles

CH	ION ADD
251	513 539
252	540 566
253	567 593
254	594 620
255	621 647
256	648 674

DF50 Hazer

CH	ION ADD	
222	512	-



Color Source Linear2

CH	ION ADD	CH	ION ADD
281	874 879	293	946 951
282	880 885	294	952 957
283	886 891	295	958 963
284	892 897	296	964 969
285	898 903	297	970 975
286	904 909	298	976 981
287	910 915	299	982 987
288	916 921	300	988 993
289	922 927	301	994 999
290	928 933	302	1000 1005
291	934 939	303	1006 1011
292	940 945	304	1012 1017

CH	ION Address			Fixture Add			
251	513	-	539	1	-	27	Mac Quantum Profiles
252	540	-	566	28	-	54	
253	567	-	593	55	-	81	
254	594	-	620	82	-	108	
255	621	-	647	109	-	135	
256	648	-	674	136	-	162	
261	710	-	718	198	-	206	D60 Vivid
262	719	-	727	207	-	215	
263	728	-	736	216	-	224	
264	737	-	745	225	-	233	
265	746	-	754	234	-	242	
266	755	-	763	243	-	251	
267	764	-	772	252	-	260	
268	773	-	781	261	-	269	
269	782	-	790	270	-	278	
270	791	-	799	279	-	287	
271	800	-	808	288	-	296	
272	809	-	817	297	-	305	
273	818	-	826	306	-	314	
274	827	-	835	315	-	323	
275	836	-	844	324	-	332	
276	845	-	853	333	-	341	
277	854	-	862	342	-	350	
278	863	-	871	351	-	359	
281	874	-	879	362	-	367	ColorSource Linear
282	880	-	885	368	-	373	
283	886	-	891	374	-	379	
284	892	-	897	380	-	385	
285	898	-	903	386	-	391	
286	904	-	909	392	-	397	
287	910	-	915	398	-	403	
288	916	-	921	404	-	409	
289	922	-	927	410	-	415	
290	928	-	933	416	-	421	
291	934	-	939	422	-	427	
292	940	-	945	428	-	433	
293	946	-	951	434	-	439	
294	952	-	957	440	-	445	
295	958	-	963	446	-	451	

CH	ION Address			Fixture Add						
296	964	-	969	452	-	457	CS Linear Cont.			
297	970	-	975	458	-	463				
298	976	-	981	464	-	469				
299	982	-	987	470	-	475				
300	988	-	993	476	-	481				
301	994	-	999	482	-	487				
302	1000	-	1005	488	-	493				
303	1006	-	1011	494	-	499				
304	1012	-	1017	500	-	505				
166	166	-	-	166	-	-		S4 LED		
167	167	-	-	167	-	-	pwr		CH	ADD
168	168	-	-	168	-	-			165	172
169	169	-	-	169	-	-				173
170	170	-	-	170	-	-				174
171	171	-	-	171	-	-				
201	231	-	-	231	-	-	Shell LED			
202	232	-	-	232	-	-		pwr	CH	ADD
203	233	-	-	233	-	-			200	79
204	234	-	-	234	-	-				80
205	235	-	-	235	-	-				81
206	236	-	-	236	-	-				82
207	237	-	-	237	-	-				83
208	238	-	-	238	-	-				84
209	239	-	-	239	-	-				
210	240	-	-	240	-	-				
211	241	-	-	241	-	-				
212	242	-	-	242	-	-				
213	243	-	-	243	-	-				
214	244	-	-	244	-	-				
215	245	-	-	245	-	-				
216	246	-	-	246	-	-				
217	247	-	-	247	-	-				
218	248	-	-	248	-	-				
222	512	-	-	512	-	-	DF50 Hazer			